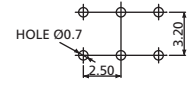
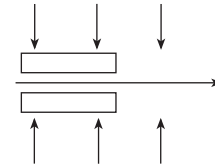
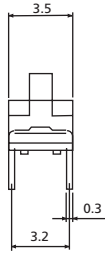
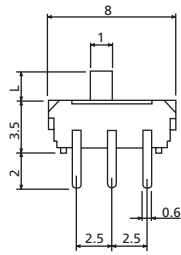
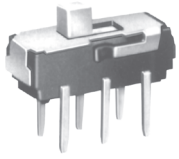


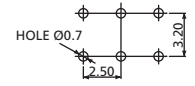
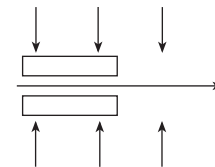
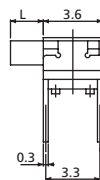
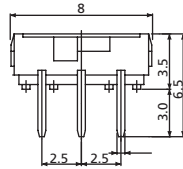
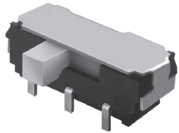
Slide Switches

8 mm Slide Switches

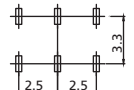
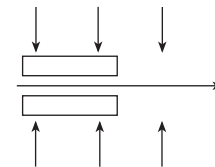
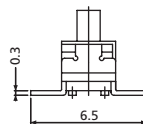
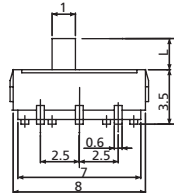
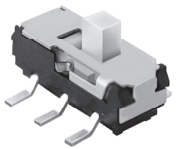
SB1 Series



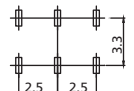
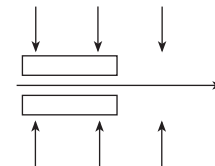
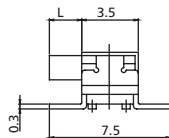
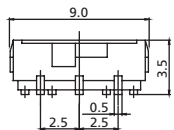
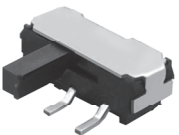
SB1HT THT Vertical Slide Switch



SB1HR THT Horizontal Slide Switch



SB1ST SMT Vertical Slide Switch



SB1SR SMT Horizontal Slide Switch

How to order:

SB1

1 TYPE OF TERMINALS:

- S SMT
- H THT

2 TYPE OF ACTION:

- T Vertical
- R Horizontal

3 HEIGHT OF KNOB (L):

- 2 L = 2.0 mm
- 4 L = 4.0 mm

General Specifications:

Rating: DC6V 0.3A

Circuit: 2C-2P

Timing: Non-Shorting

Travel: 2 ± 0.1 mm

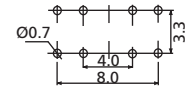
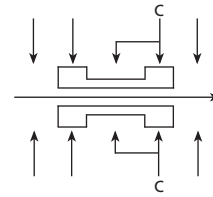
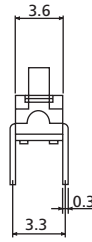
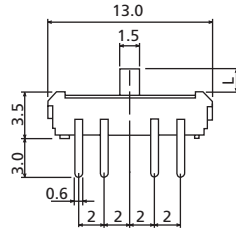
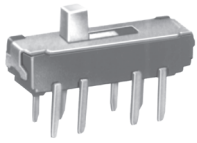
Operating Force: 200 ± 100 gf

Slide Switches

Slide Switches

13 mm Slide Switches

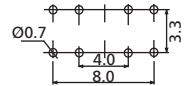
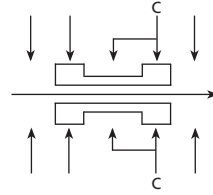
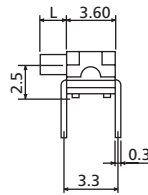
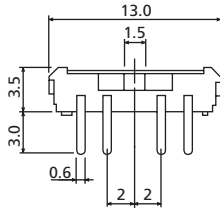
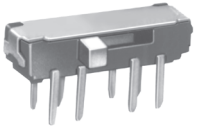
SB2 Series



SB2HT THT, Vertical Slide Switch

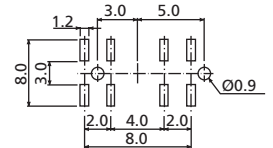
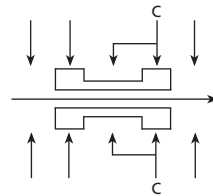
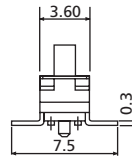
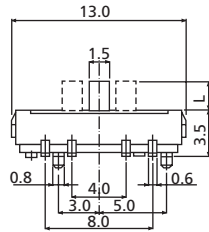
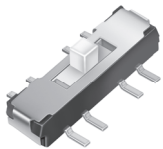
Operating Force: L□C□R: 200±100gf L□C□R: 300±150gf

Slide Switches



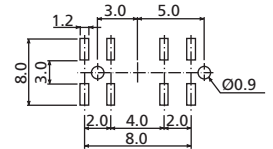
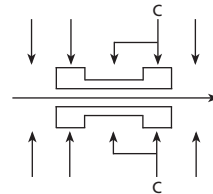
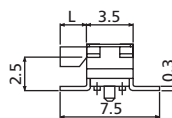
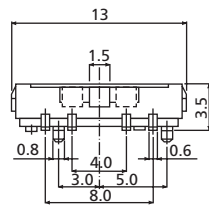
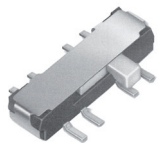
SB2HR THT, Horizontal Slide Switch

Operating Force: L□C□R: 250±100gf L□C□R: 300±150gf



SB2SV SMT, Vertical Slide Switch

Operating Force: L□C□R: 200±100gf L□C□R: 250±100gf



SB2SR SMT, Horizontal Slide Switch

Operating Force: L□C□R: 200±100gf L□C□R: 250±100gf

How to order:

SB2 1 2 3 4

1 TYPE OF TERMINALS:

- S SMT
- H THT

2 TYPE OF ACTION:

- T Vertical
- R Horizontal

3 HEIGHT OF KNOB (L):

- 2 L = 2.0 mm
- 4 L = 4.0 mm

General Specifications:

Rating: DC6V 0.3A

Circuit: 2C-3P

Timing: Non-Shorting

Travel: 2 + 2 ± 0.1 mm

Operating Force: 200 ± 100 gf