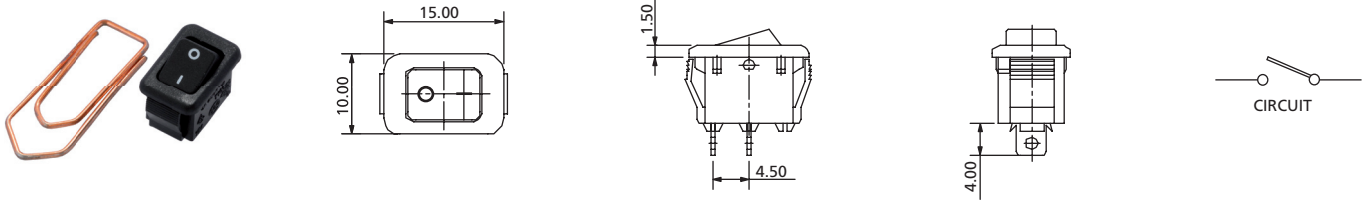


# Rocker Switches

## 15 x 10 mm SP Ultra Miniature Rocker Switch

## RK8 Series



**RK8S1D8D \_\_ ON-OFF**

TERMINAL	ACTUATOR	ACTUATOR MARKING	PANEL SIZE												
<p>D Solder Tag</p>	<p>8 Flat</p>	<table border="0"> <tr> <td>A</td> <td></td> <td>D</td> <td></td> </tr> <tr> <td>B</td> <td></td> <td>E</td> <td></td> </tr> <tr> <td>C</td> <td></td> <td>F</td> <td></td> </tr> </table>	A		D		B		E		C		F		<p>PANEL CUT-OUT Snap-in mounting</p>
A		D													
B		E													
C		F													
			<table border="1"> <thead> <tr> <th>X (Panel thickness)</th> <th>Dimension Y</th> <th>Dimension Z</th> </tr> </thead> <tbody> <tr> <td>0.75 to 1.25 mm</td> <td>13.6 +0/-0.1 mm</td> <td>9.20 ±0.1 mm</td> </tr> <tr> <td>1.25 to 2.00 mm</td> <td>13.7 +0/-0.1 mm</td> <td>9.20 ±0.1 mm</td> </tr> <tr> <td>2.00 to 2.50 mm</td> <td>13.8 +0/-0.1 mm</td> <td>9.20 ±0.1 mm</td> </tr> </tbody> </table>	X (Panel thickness)	Dimension Y	Dimension Z	0.75 to 1.25 mm	13.6 +0/-0.1 mm	9.20 ±0.1 mm	1.25 to 2.00 mm	13.7 +0/-0.1 mm	9.20 ±0.1 mm	2.00 to 2.50 mm	13.8 +0/-0.1 mm	9.20 ±0.1 mm
X (Panel thickness)	Dimension Y	Dimension Z													
0.75 to 1.25 mm	13.6 +0/-0.1 mm	9.20 ±0.1 mm													
1.25 to 2.00 mm	13.7 +0/-0.1 mm	9.20 ±0.1 mm													
2.00 to 2.50 mm	13.8 +0/-0.1 mm	9.20 ±0.1 mm													

### How to order:

RK8

- |  |   |
|--|---|
| <p><b>1 POLES:</b><br/>S Single Pole</p> <p><b>2 SWITCHING:</b><br/>1 ON - OFF<br/>2 ON - ON<br/>4 MOM - OFF</p> <p><b>3 TERMINAL (See above drawings):</b><br/>D Solder Tag</p> <p><b>4 ACTUATOR (See above drawings):</b><br/>8 Flat</p> <p><b>5 ACTUATOR MARKING:</b><br/>A See above drawings<br/>B See above drawings<br/>C See above drawings<br/>D See above drawings<br/>E See above drawings<br/>F See above drawings</p> | <p><b>6 BASE COLOR:</b><br/>A Black<br/>H Grey<br/>B White</p> <p><b>7 ACTUATOR COLOR:</b><br/>A Black<br/>H Grey<br/>B White<br/>C Red</p> |
|--|---|

### General Specifications:

#### FEATURES

- » Single pole mini size rocker switch
- » Appealing outlook
- » Non illuminated

#### MATERIALS

- » Movable Contact: Silver alloy
- » Stationary Contact: Silver alloy
- » Terminals: Silver plated copper
- » Spring: Piano wire

#### MECHANICAL

- » Temperature Range: 0°C to +100°C

#### ELECTRICAL

- » Electrical Life: 10,000 cycles
- » Rating: 6A 125VAC / 3A 250VAC  
3A 250VAC
- » Initial Contact Resistance: 20mΩ max.
- » Insulation Resistance: 100MΩ min. at 500VDC