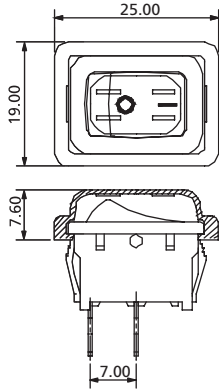


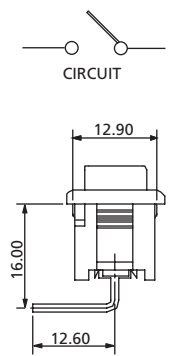
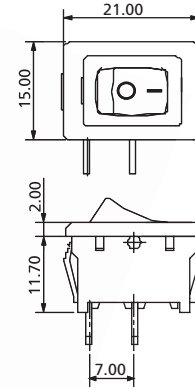
Rocker Switches

21 x 15 mm SP Rocker Switches

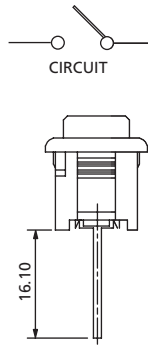
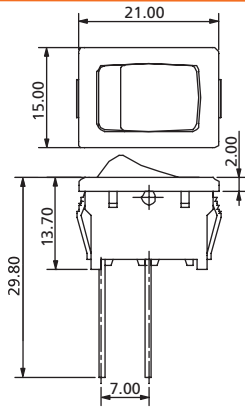
RK4 Series



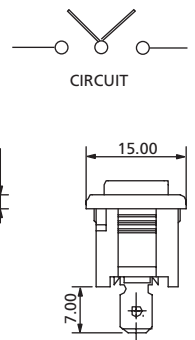
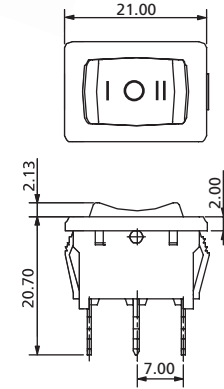
RK4S1Q4D _ _ _



RK4S1R4D _ _ _ N



RK4S1H4A _ _ _ N



RK4S3Q4G _ _ _ N

TERMINAL

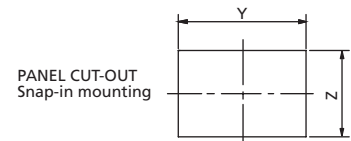
- Q** 4.8mm TAB, 0.8mm Thick
- D1** Solder Tag Type 1
- D2** Solder Tag Type 2
- D3** Solder Tag Type 3

- R** Thru Hole Right Angle
- L** Thru Hole Left Angle
- H** Thru Hole Straight

ACTUATOR MARKING

- A**
- B**
- C**
- D**
- E**
- F**
- G**

PANEL SIZE



| X (Panel thickness) | Dimension Y | Dimension Z |
|---------------------|------------------|-------------------|
| 0.75 to 1.25 mm | 19.20 +0.1/-0 mm | 12.90 +0.15/-0 mm |
| 1.25 to 2 mm | 19.40 +0.1/-0 mm | 12.90 +0.15/-0 mm |
| 2 to 3 mm | 19.80 +0.1/-0 mm | 12.90 +0.15/-0 mm |

How to order:

RK4

- 1** **POLES:**
S Single Pole
- 2** **SWITCHING:**
1 ON - OFF
2 ON - ON
3 ON - OFF - ON
4 MOM - OFF
- 3** **TERMINAL (See above drawings):**
Q 4.8mm TAB, 0.8mm THICK
D1 Solder Tag Type 1
D2 Solder Tag Type 2
D3 Solder Tag Type 3
R Thru Hole Right Angle
L Thru Hole Left Angle
H Thru Hole Straight
- 4** **ACTUATOR:**
4 Curve
- 5** **ACTUATOR MARKING:**
A See above drawings
B See above drawings
C See above drawings
D See above drawings
E See above drawings
F See above drawings
G See above drawings
- 6** **BASE COLOR:**
A Black
H Grey
B White
- 7** **ACTUATOR COLOR:**
A Black
H Grey
B White
C Red
- 8** **WATERPROOF COVER:**
N None Cover (Standard)
W With Waterproof Cover

General Specifications:

FEATURES

- » Single pole rocker switch up to 20A 125VAC
- » Non illuminated

MATERIALS

- » Contact Arm: Silver cadmium alloy
- » Terminals: Silver plated copper
- » Spring: Piano wire

MECHANICAL

- » Temperature Range: -20°C to +125°C

ELECTRICAL

- » Electrical Life: 10,000 cycles
- » Rating: 20A125VAC, 12A250VAC
10A125VAC, 6A250VAC
6A125VAC, 3A250VAC
6A250VAC
10(4)A250VAC-T125
- » Initial Contact Resistance: 20mΩ max.
- » Insulation Resistance: 100MΩ min. at 500VDC