

Pushbutton Switches

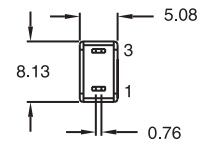
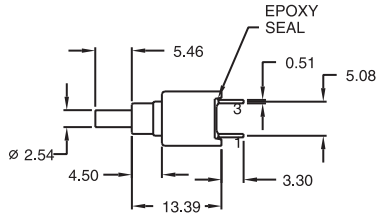
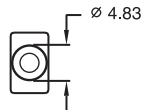
Sealed Sub-Miniature Pushbutton Switches

PB4 Series

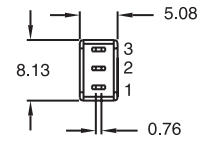
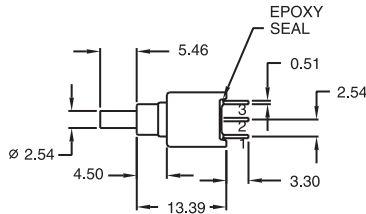
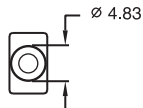
Pushbutton Switches



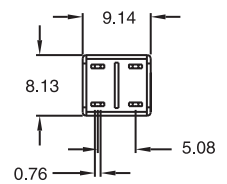
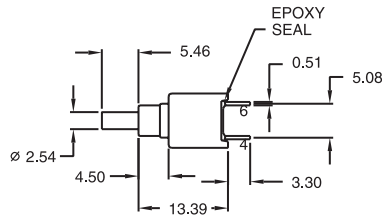
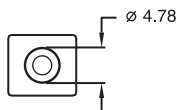
PB4SFT2



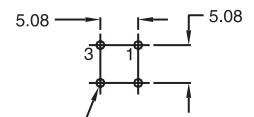
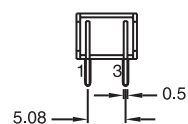
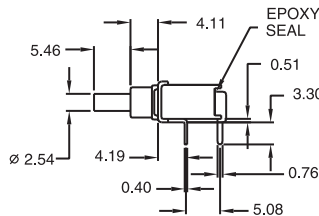
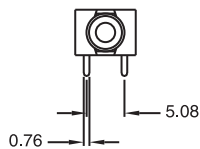
PB4SNT2



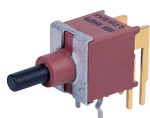
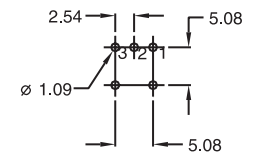
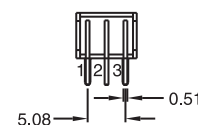
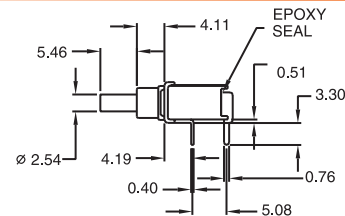
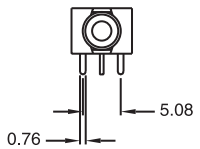
PB4DFT2



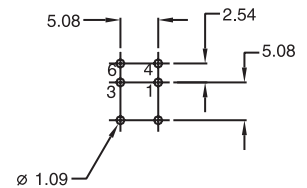
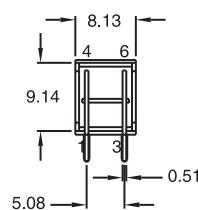
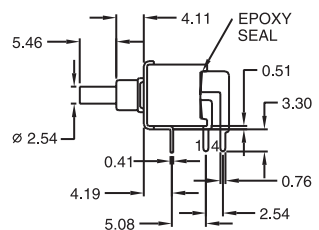
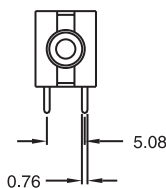
PB4SFT6



PB4SNT6



PB4DFT6



How to order:

PB4

1 POLES & SWITCHING:
 SN SP ON-MOM
 SF SP OFF-MOM
 DF DP OFF-MOM

2 TERMINALS:
 T1 Solder Lug
 T2 PC thru-hole
 T5 Wire wrap
 T6 Right angle, PC thru-hole
 T6N Right angle, snap-in, PC thru hole
 T7 Vertical right angle, PC thru hole
 T7N Vertical right angle, snap-in, PC thru-hole
 VS2 9,30 mm high, V-bracket
 V2N 9,30 mm high, snap-in V-bracket

3 CONTACT MATERIAL:
 AG Silver
 AU Gold
 UT Gold, tin-lead
 GT Silver, tin-lead
 UG Gold over silver
 UGT Gold over silver, tin-lead

4 SEAL:
 E Epoxy (Standard)

5 ROHS & LEAD FREE:
 blank RoHS compliant
 V RoHS & lead free

6 CAP:
 C2 Cap2
 C5 Cap5

7 CAP COLOR:
 Black (Standard)
 White
 Red
 Orange
 Yellow
 Green
 Blue
 Brown
 Gray

General Specifications:

MATERIALS

» Movable Contact & Fixed Terminals:
 AG, GT, UG & UGT: Silver plated over copper alloy
 AU & UT: Gold over nickel plated over copper alloy

MECHANICAL

» Operating Temperature: -30°C to +85°C
 » Mechanical Life: 50,000 cycles at full load

CONTACT RATING

» AG, GT, UG & UGT: 3A 120VAC/28VDC
 1A 250VAC
 » AU & UT: 0.4VA max. 20V max. (AC/DC)

ELECTRICAL

» Contact Resistance: 20mΩ max. initial @ 2-4VDC
 100mA for silver & gold plated contacts
 » Insulation Resistance: 1,000MΩ min.

Pushbutton Switches

Sealed Sub-Miniature Pushbutton Switches

PB4 Series

Pushbutton Switches

PB4SFT7

PB4SNT7

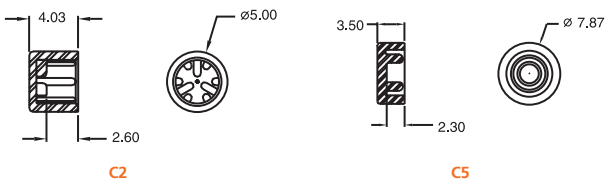
PB4DFT7

PB4SFVS2

PB4SNVS2

PB4DFVS2

CAPS (Colors: white, black, green, red)

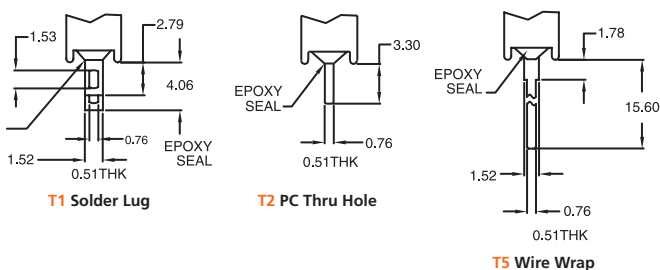


SWITCH FUNCTION

NO. POLES	MODEL NO.	SWITCH FUNCTION		CONNECTED TERMINALS		SCHEMATIC
		POS.1	POS.2	POS.1	POS.2	
SP	PB4SN	ON	MOM	2-1	2-3	
	PB4SF	OFF	MOM	OPEN	1-3	
DP	PB4DF	OFF	MOM	OPEN	1-3,4-6	

MOM=MENTORARY

TERMINAL OPTIONS



SNAP-IN TERMINAL OPTIONS

