

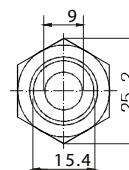
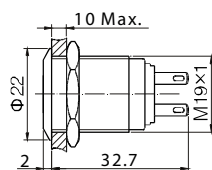
# Pushbutton Switches

Anti-Vandal Pushbutton Switch - Mounting Hole Ø19mm

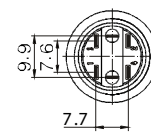
PAV19B Series



Terminal Type: Solder Lug 2x0.5mm  
Illumination: Dot Illuminated blue



Top View

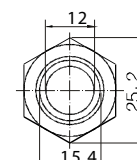
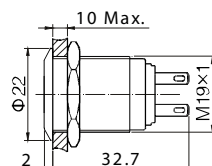


Terminal Arrangement

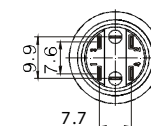
PAV19B...FS1GN



Terminal Type: Solder Lug 2x0.5mm  
Illumination: Ring Illuminated green



Top View



Terminal Arrangement

PAV19B...FS2FN

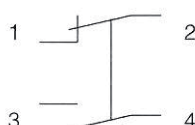
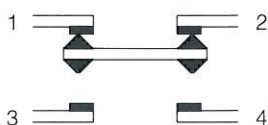
## LED SPECIFICATIONS

Lamp Type	LED Lamp AC/DC *			Lamp Circuit Diagram
Rated Voltage	AC/DC6V	AC/DC12V	AC/DC110V	
	AC/DC24V	AC/DC36V	AC/DC220V	
Rated Amper	about 15mA		about 3mA	
LED Colors	red, green, yellow, orange, blue, white			
Life	40,000 hours (reference)			

Using AC/DC LED lamp, the terminals have not difference of anode and cathode;  
Using inner resistance, don't need to connect outer resistance.

\* DC LED and other voltages can be made by request.

## SWITCHING



Using 4 terminals, double-break and fast-motion changeover contact.

## INSTALLATION EFFECT



Screw

Solder Lug

## How to order:

PAV19B

### 1 OPERATING TYPE:

- M Momentary
- L Latching

### 2 FRONT SHAPE:

- F Flat Round

### 3 TERMINATION:

- W Screw Terminal
- S Solder Lug 2.8x0.5 mm

### 4 ILLUMINATION:

- 0 No Illumination
- 1 Dot Type Illumination
- 2 Ring Type Illumination

### 5 LED COLOR:

- N No Illumination
- C Red F Green E Yellow
- D Orange G Blue B White

### 6 ENGRAVING:

- A Stop
  - B Start
  - C Return
  - D Reset
  - E |
  - F ||
  - G ▶
  - H ↑
  - J ■
  - K ⏻
  - L ⚡
  - M ⚡
  - N ○
- (Other engraving can be made by request)

## Specifications:

### CHARACTERISTICS

- > Protection Degree: IP65 (IP67 made to order)
- > Anti Vandal Degree: IK09
- > Switch Rating: 5A 250VAC
- > Operation Type: Momentary/Latching
- > Contact Configuration: 1NO1NC
- > Contact Resistance: 50mΩ Max.
- > Insulation Resistance: 1000MΩ Min.
- > Dielectric Intensity: 2000VAC
- > Operating Temperature: -20°C to +55°C
- > Mechanical Life: 1,000,000 cycles
- > Electrical Life: 50,000 cycles
- > Panel Thickness: 1 to 10 mm
- > Torque: 5 to 14 Nm
- > Operation Pressure: about 4 N
- > Operation Travel: about 2.5mm
- > Switching: Double-Break Slow-Motion Contact

### MATERIAL

- > Contact: Silver alloy
- > Button: Stainless steel
- > Body: Stainless steel
- > Base: PC(by Solder Lug), PA(by Screw Terminal)

# Pushbutton Switches

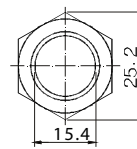
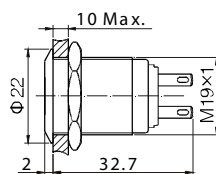
## Anti-Vandal Pushbutton Switch - Mounting Hole Ø19mm

## PAV19B Series

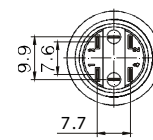


Terminal Type: Solder Lug 2x0.5mm  
Illumination: No Illumination

PAV19B...FS0NN



Top View

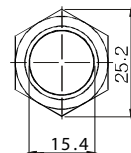
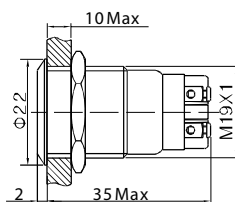


Terminal Arrangement

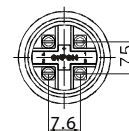


Terminal Type: Screw Terminal  
Illumination: No Illumination

PAV19B...FW0NN



Top View

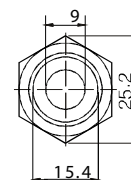
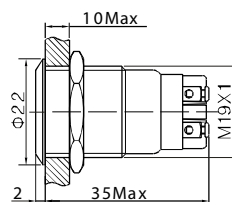


Terminal Arrangement

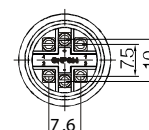


Terminal Type: Screw Terminal  
Illumination: Dot Illuminated green

PAV19B...FW1FN



Top View

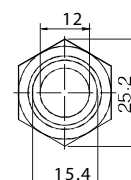
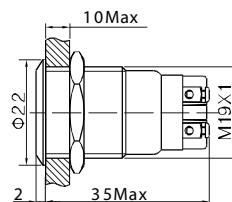


Terminal Arrangement

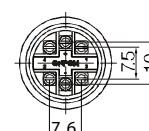


Terminal Type: Screw Terminal  
Illumination: Ring Illuminated blue

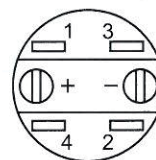
PAV19B...FW2GN



Top View



Terminal Arrangement



Terminal Description:

- 1 & 2 are normally closed (NC)
- 3 & 4 are normally opened (NO)
- + & - are lamp terminals.
- The standard LED terminals have no difference of anode and cathode.
- The lamp and switch are relatively independent and can use switch or peripheral circuit to control the lamp state.