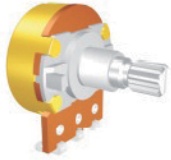
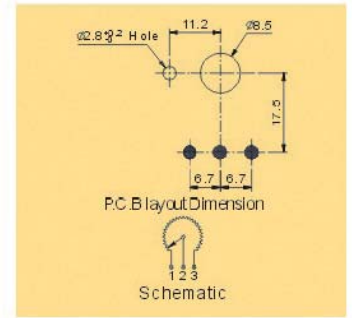
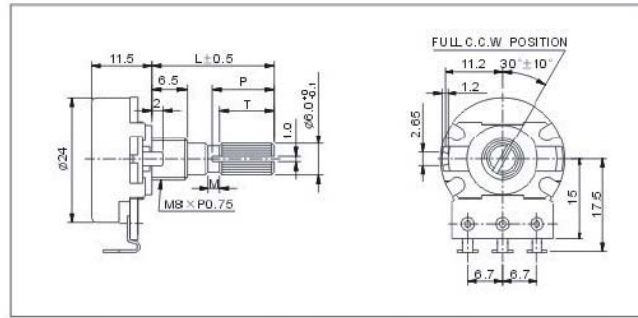


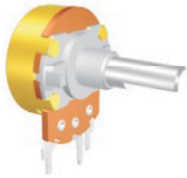
Vertical Type, Single Unit,
Solder Terminal



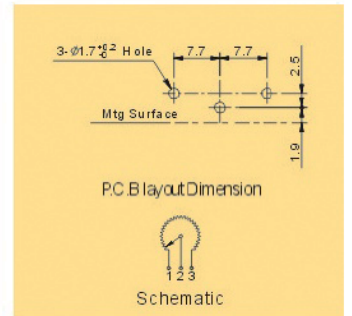
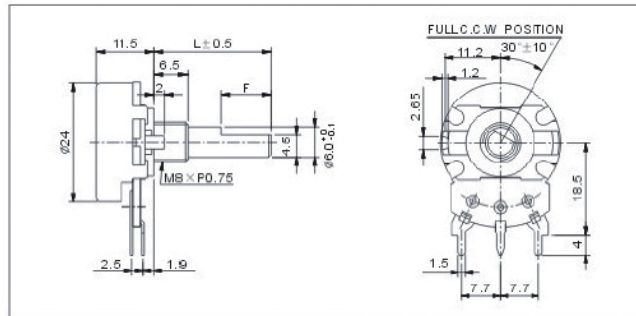
GP9MNP8



Vertical Type, Single Unit,
P.C.B. Terminal



GP9MN



SPECIFICATIONS

Electrical Characteristics

- > Total Resistance: 500 Ω to 1M Ω
- > Total Resistance Tolerance: +/-20%
- > Resistance Taper: A, B, C
- > Max. Operating Voltage: 500VAC (Taper B), 250VAC (other Tapers)
- > Rated Power: 0.5W (Taper B), 0.25W (other Tapers)
- > Sliding Noise: 100mV Max.
- > Insulation Resistance: 100MΩ Min. at 500VDC
- > Withstand Voltage: 500VAC 1 min.
- > Residual Resistance (Terminal 1~2, 2~3): 10Ω Max.

Durability

- > Rotational Life: 10,000 Cycles (Standard)
1,000,000 Cycles (By Request)

Mechanical Characteristics

- > Total Rotational Angle: 300°±10°
- > Rotational Torque: 30gf.cm ~150gf.cm
- > Rotational Stopper Strength: 5.0Kgf.cm Min.
- > Push-Pull Strength: 10.0Kgf Min.

Switch Characteristics

- > Circuit: SPST
- > Contact Resistance: 50mΩ Max.
- > Rated Power: 1.0A 125VAC/DC
- > Rotational Angel: 50°±10°
- > Torque: 300gf.cm~800gf.cm

How to order:

GP9M RoHS Compliant

1 SWITCH FUNCTION:

- N Without Switch
- S With Switch

4 RESISTANCE VALUE (Unit: Ω):

- free text 500 Ω to 1M Ω
- e.g.: 220K for 220.000 Ω

6 SHAFT LENGTH (L):

- free text See drawings
- e.g.: 25 for L=25mm

2 TYPE OF TERMINALS:

- ... See drawings

5 SHAFT TYPE:

- KQ See drawings
- R See drawings
- RE See drawings
- F See drawings

3 TYPE OF TAPER:

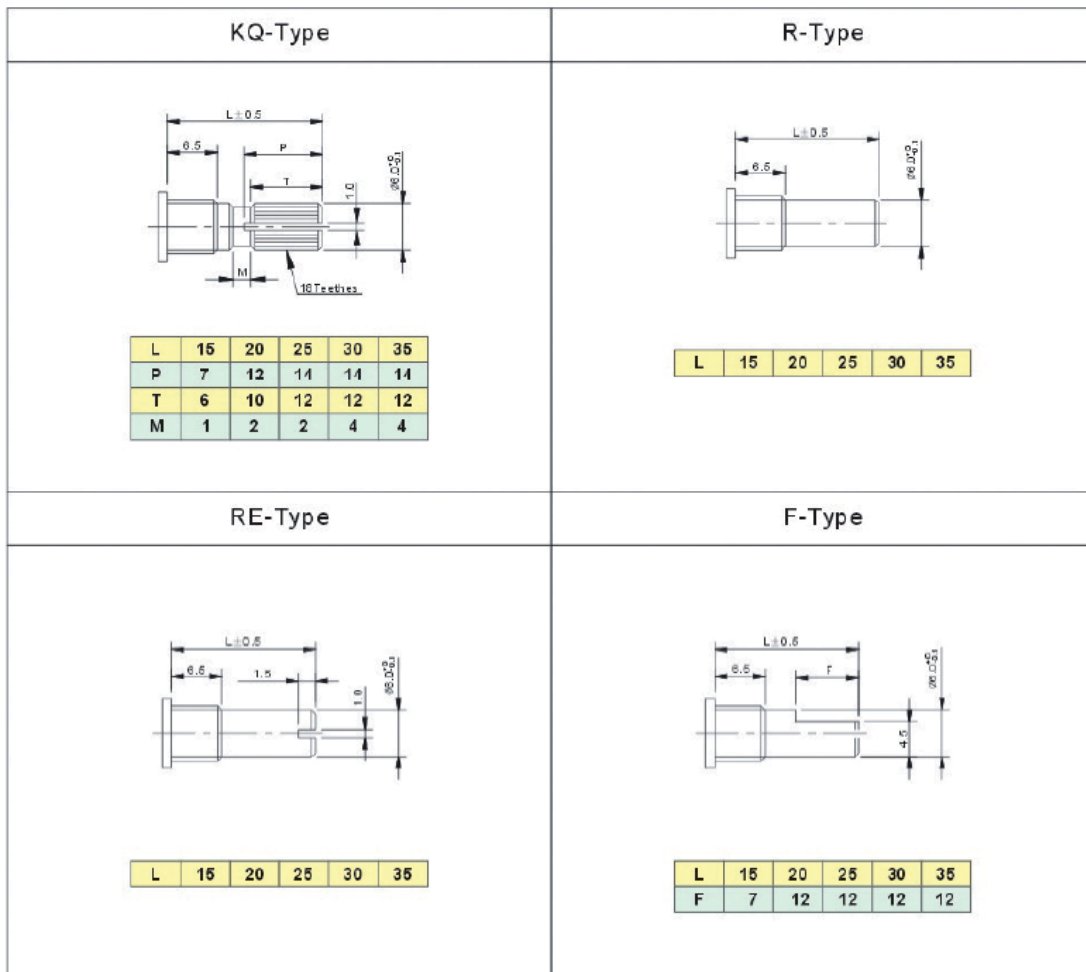
- A Logarithm
- B Linear
- C Anti-Logarithm

Potentiometers

Rotary Potentiometer with Metal Shaft

GP9M Series

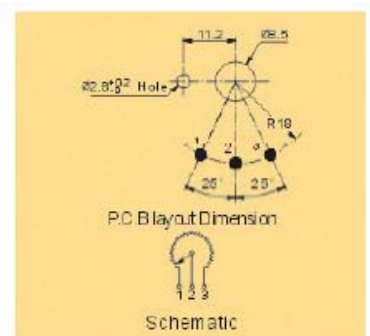
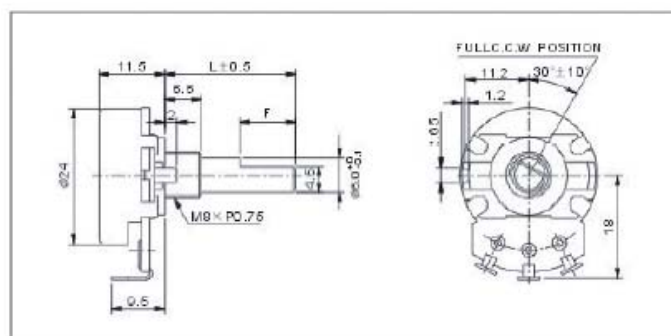
Shaft Type:



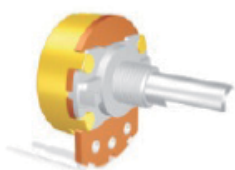
Vertical Type, Single Unit, Solder Terminal



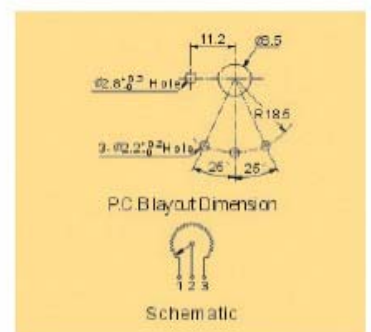
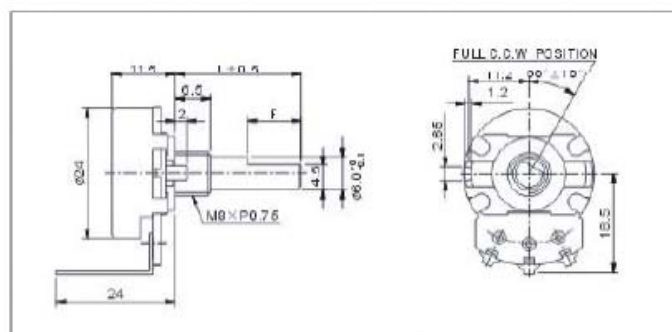
GP9MNP



Horizontal Type, Single Unit, P.C.B. Terminal



GP9MNP2

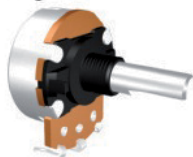


Potentiometers

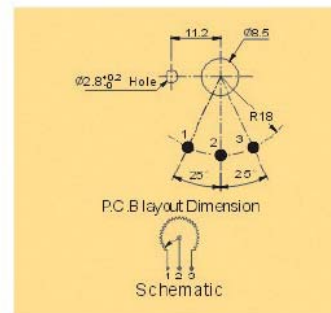
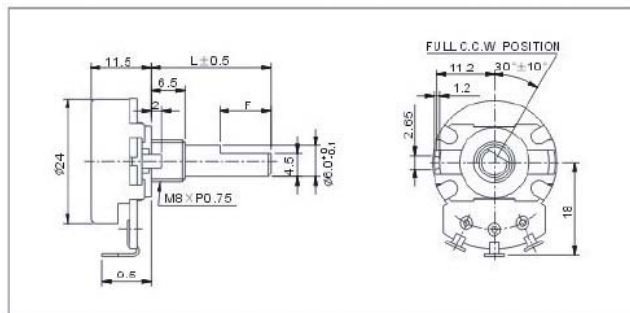
Rotary Potentiometer with Metal Shaft

GP9M Series

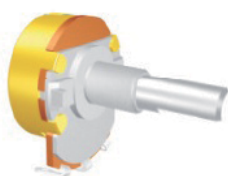
Vertical Type, Single Unit,
Solder Terminal, Plastic
Bushing



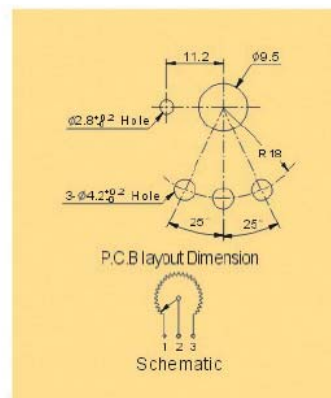
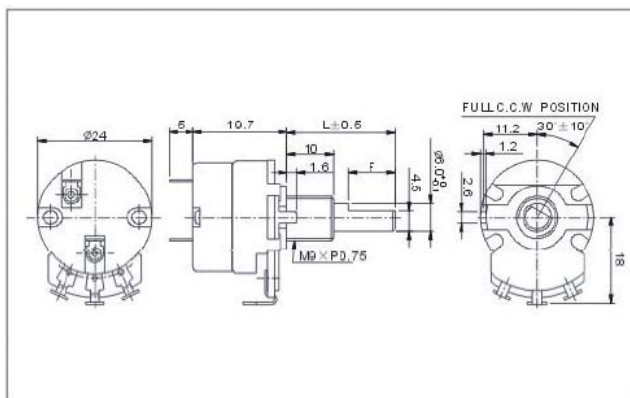
GP9MNP-U



Vertical Type, Single Unit,
Solder Terminal With plastic
bushing



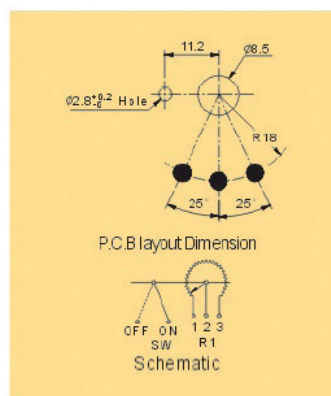
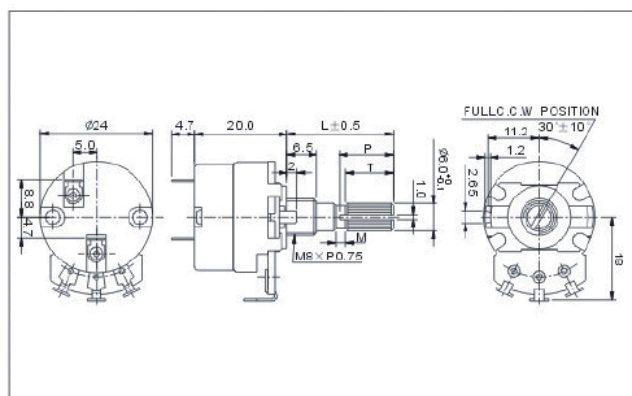
GP9MNPV



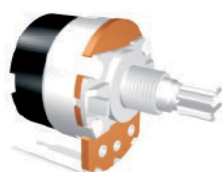
Vertical Type with Switch,
Single Unit, Solder Terminal



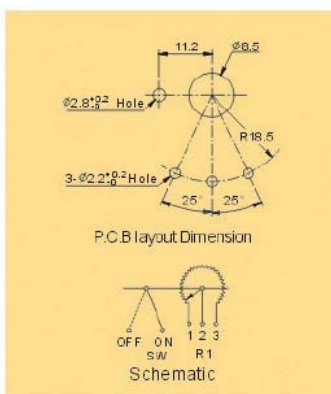
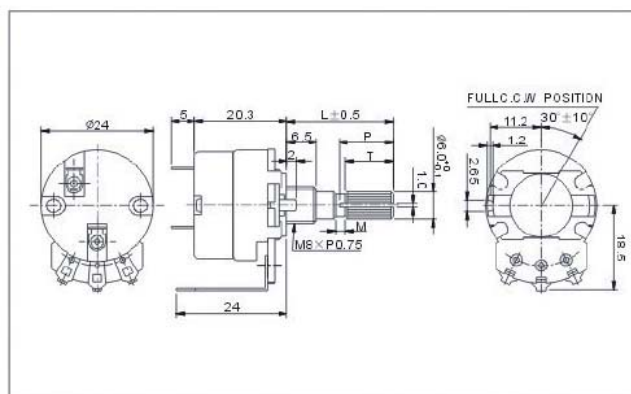
GP9MSP



Horizontal Type with Switch,
Single Unit, P.C.B. Terminal



GP9MSP4



Potentiometers

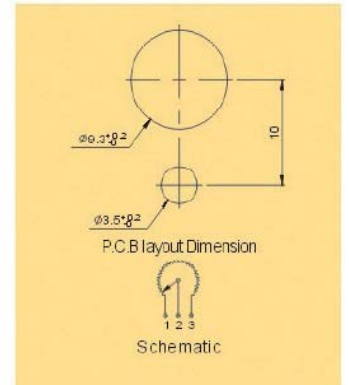
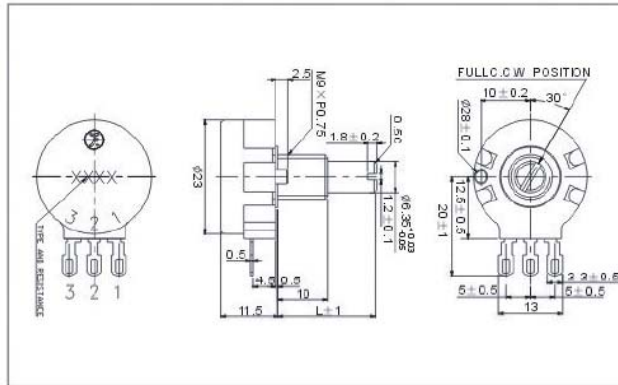
Rotary Potentiometer with Metal Shaft

GP9M Series

Vertical Type, Single Unit,
Solder Terminal,
Sealed Type

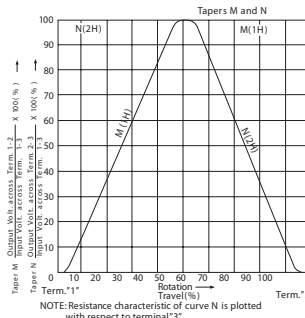
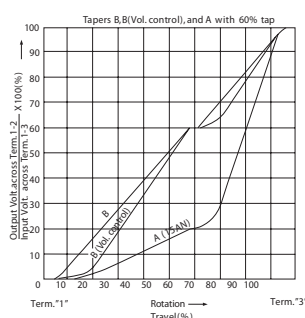
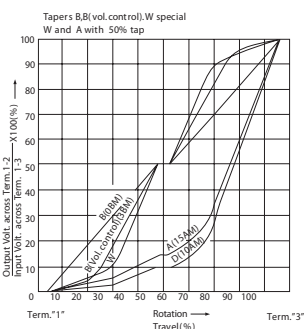
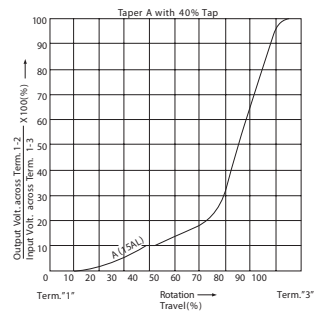
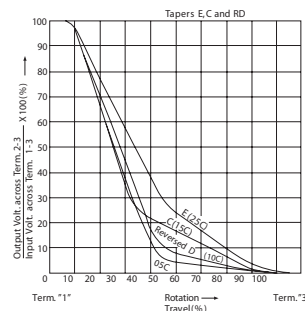
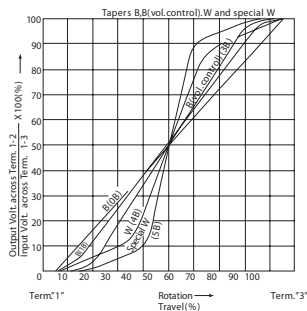
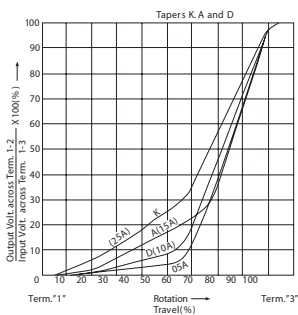


GP9MN5



• Resistance Taper Characteristics

Resistance Taper Characteristic	Test Point Rotation (%)	$\frac{V1-2}{V1-3} \times 100$ (%)	$\frac{V2-3}{V1-3} \times 100$ (%)
A	50	10 ~ 25	—
B	50	40 ~ 60	—
C	50 (started from 3T)	—	10 ~ 25
D	50	6 ~ 15	—
E	50	—	18 ~ 34
W	30 (± 5 -degree)	5 ~ 15	—
	50	40 ~ 60	—
	70 (± 5 -degree)	85 ~ 95	—



NOTE: Resistance characteristic of curve N is plotted with respect to terminal '3'